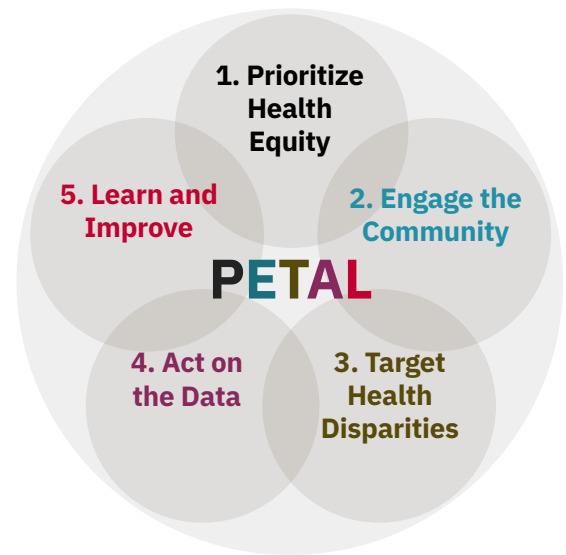


# Using the PETAL Framework to Advance Health Equity

**CONTRIBUTING AUTHORS:** Joshua Joseph, MD, MPH, The Ohio State University; Aleece Caron, PhD, Case Western Reserve University; Shipra Singh, PhD, University of Toledo; Susan De Luca, MSW, PhD, Case Western Reserve University; Anne Gagliotti, MD, MS, Case Western Reserve University; Adam Perzynski, PhD, Case Western Reserve University, on behalf of Team Best Practices\*



“Racial equity is the process of eliminating racial disparities and improving outcomes for everyone.”<sup>1</sup> Advancing racial equity and addressing racism in health care and community settings necessitates education and engagement in activities focused on anti-racism. Evaluation of policies, practices, and procedures that lead to inequitable outcomes is also required.<sup>2</sup> The PETAL framework is a useful starting point for equity efforts in clinical settings.<sup>3</sup>



PETAL Framework <sup>3</sup>	Action Steps	Clinical Example
<b>Prioritize Health Equity</b>	Assess impact of health disparities on your community; make health equity a priority for your institution.	While exploring a Centers for Disease Control database and your clinic’s electronic health record data, your team learns that Black seniors with hypertension in your community and clinic have higher rates of uncontrolled blood pressure, heart attack, and stroke. <sup>4</sup>
<b>Engage the Community</b>	Develop protocols to engage with the community and patients.	In interviewing community members, you find that the neighborhood pharmacy recently closed, making medication adherence a challenge.
<b>Target Health Disparities</b>	Understand the role of social determinants of health.	While reviewing your clinic’s social needs screening data, you learn that 50% of your patients do not have a car, making access to medication difficult.
<b>Act on the Data</b>	Address barriers contributing to health inequity by creating an action plan.	Your team works with a pharmacy and local community leaders to explore medication delivery options in your area.
<b>Learn and Improve</b>	Share knowledge and implement processes to improve equity with all stakeholders.	Follow up with patients about access challenges and solutions. Share information with local governments and leaders, and create a long-term plan to address issues.

For more information, access Cardi-OH’s expanded resource on **racism and equity in health care**.

**References**

1. Race Forward: The Center for Racial Justice Innovation; Apollon D, Keheler T, Medeiros J, et al. Moving the Race Conversation Forward: Racial Discourse Change in Practice - Part 2. [https://act.colorlines.com/action/attachment/1069/t-0115/1/-/-/-/~/Racial\\_Discourse\\_Part\\_2.PDF](https://act.colorlines.com/action/attachment/1069/t-0115/1/-/-/-/~/Racial_Discourse_Part_2.PDF). Published January 2014. Accessed May 15, 2022.
2. Gray DM, Joseph JJ, Glover AR, Olayiwola JN. How academia should respond to racism. *Nat Rev Gastroenterol Hepatol*. 2020;17(10):589–590. doi: 10.1038/s41575-020-0349-x.
3. Brooks D, Douglas M, Aggarwal N, et al. Developing a framework for integrating health equity into the learning health system. *Learn Health Syst*. 2017;1(3):e10029. doi: 10.1002/lrh2.10029.
4. Centers for Disease Control and Prevention, National Center for Chronic Disease Prevention and Health Promotion. County Profile for Cuyahoga, OH: CDC Interactive Atlas of Heart Disease and Stroke. <https://nccd.cdc.gov/DHDSAtlas/DetailledPDFReport.aspx?AreaIds=39035&ThemeId=18&filterIds=1,5,3,6>

The Ohio Cardiovascular and Diabetes Health Collaborative is funded by the Ohio Department of Medicaid and administered by the Ohio Colleges of Medicine Government Resource Center. The views expressed in this document are solely those of the authors and do not represent the views of the state of Ohio or federal Medicaid programs.

For more information head to [Cardi-OH.org](https://www.cardi-oh.org).

© 2022 Cardi-OH

\*Social Determinants of Health Working Group